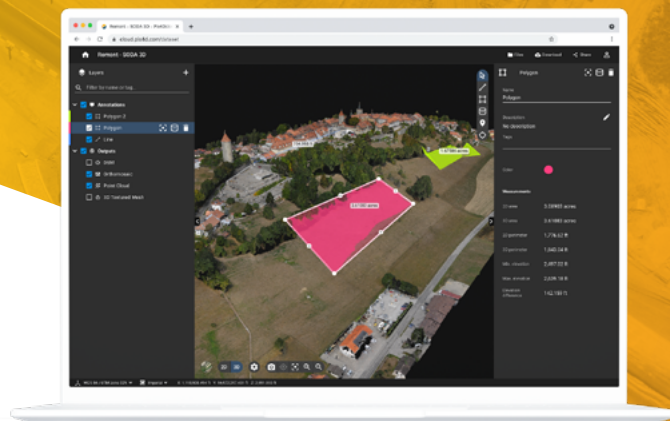




PIX4Dcloud



The online platform for drone mapping, progress tracking, and site documentation

Professional photogrammetry on the cloud



Accurate results

Rely on PIX4D's processing algorithms to get survey-grade results from images. Choose the AutoGCPs feature for even greater accuracy.



Analysis made easy

Get an instant view of any jobsite from anywhere, on your browser, in 2D and 3D, with results you can measure, explore, compare, share and collaborate on.



Up-to-date documentation

Keep a permanent visual archive of your jobsite. Resolve disputes with stakeholders and clients more efficiently.



Map, measure, and document the progress of your site

Range of Outputs



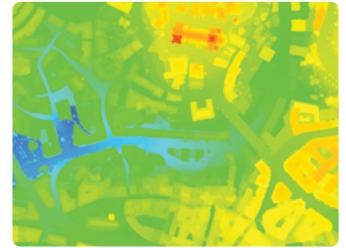
3D point cloud
.las



3D textured mesh
.fbx, .obj

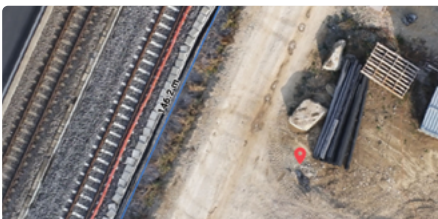


Orthomosaic
GeoTiff (.tif)



Digital Surface Model (DSM)
GeoTiff (.tif)

With a variety of tools



Measure, annotate and share
Measure distances, highlight critical elements and share data with your team, clients or stakeholders



Overlay design plans and maps
Compare the as-built with the as-designed to instantly verify schedules and site progress.



Compare image maps over time
Compare two specific days to spot what has changed

Choose the right solution for your needs



PIX4Dcloud

- Create accurate 2D maps and 3D models from images
- Measure distances, areas, and volumes
- Add annotations
- Generate elevation profiles
- Perform virtual inspections
- Share with team and stakeholders



PIX4Dcloud Advanced

All PIX4Dcloud features, plus:

- Track and document site progress with visual Timeline
- Increase accuracy with AutoGCPs
- Compare volumes over time
- Overlay design plans and maps
- Compare two image maps to see what has changed



Enterprise

PIX4Dcloud or PIX4Dcloud Advanced interface and features, plus:

- PIX4Dengine Cloud API access
- Custom integration
- Custom storage
- Pay per use

Try for free at pix4d.com/cloud